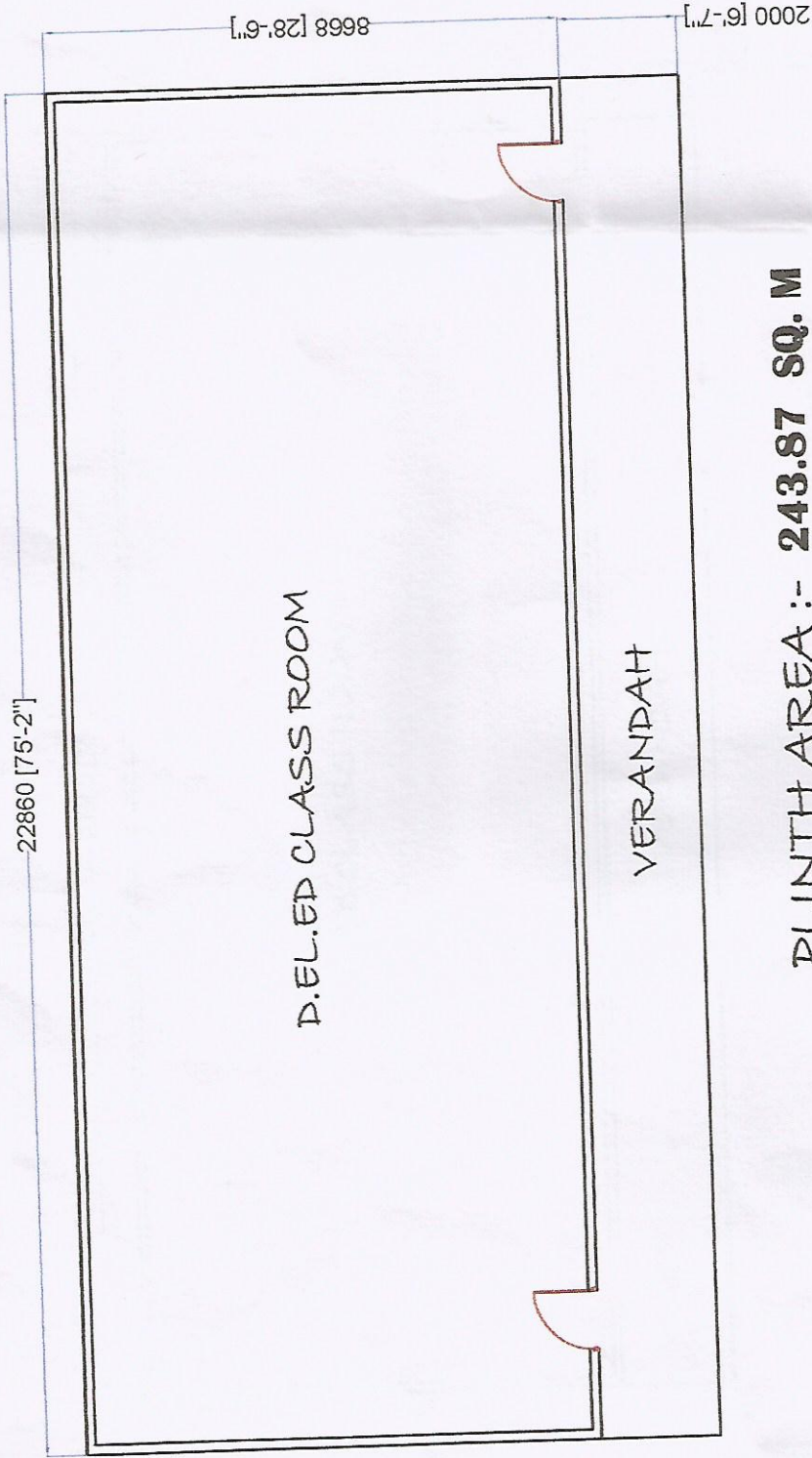


DIET BUILDING NO. 2
PLAN FOR D.EL.ED CLASSROOM BUILDING



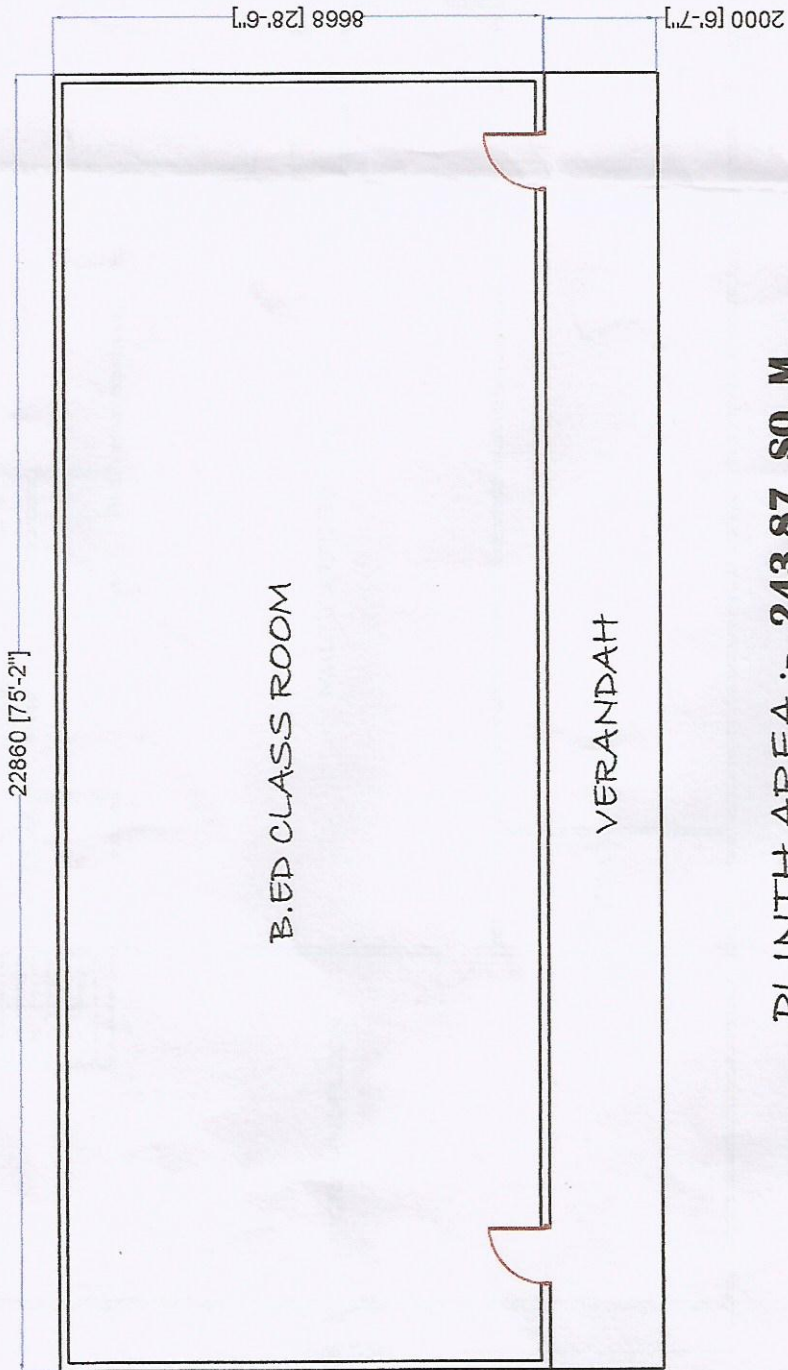
PLINTH AREA :- 243.87 SQ. M

Amey
Principal i/c
Princ. Karbi Anglong
DIET, DIPHU.

Debit
Junior Engineer
Town & Country Planning
Diphu, Karbi Anglong

DIET BUILDING NO.3

PLAN FOR B.ED CLASSROOM BUILDING

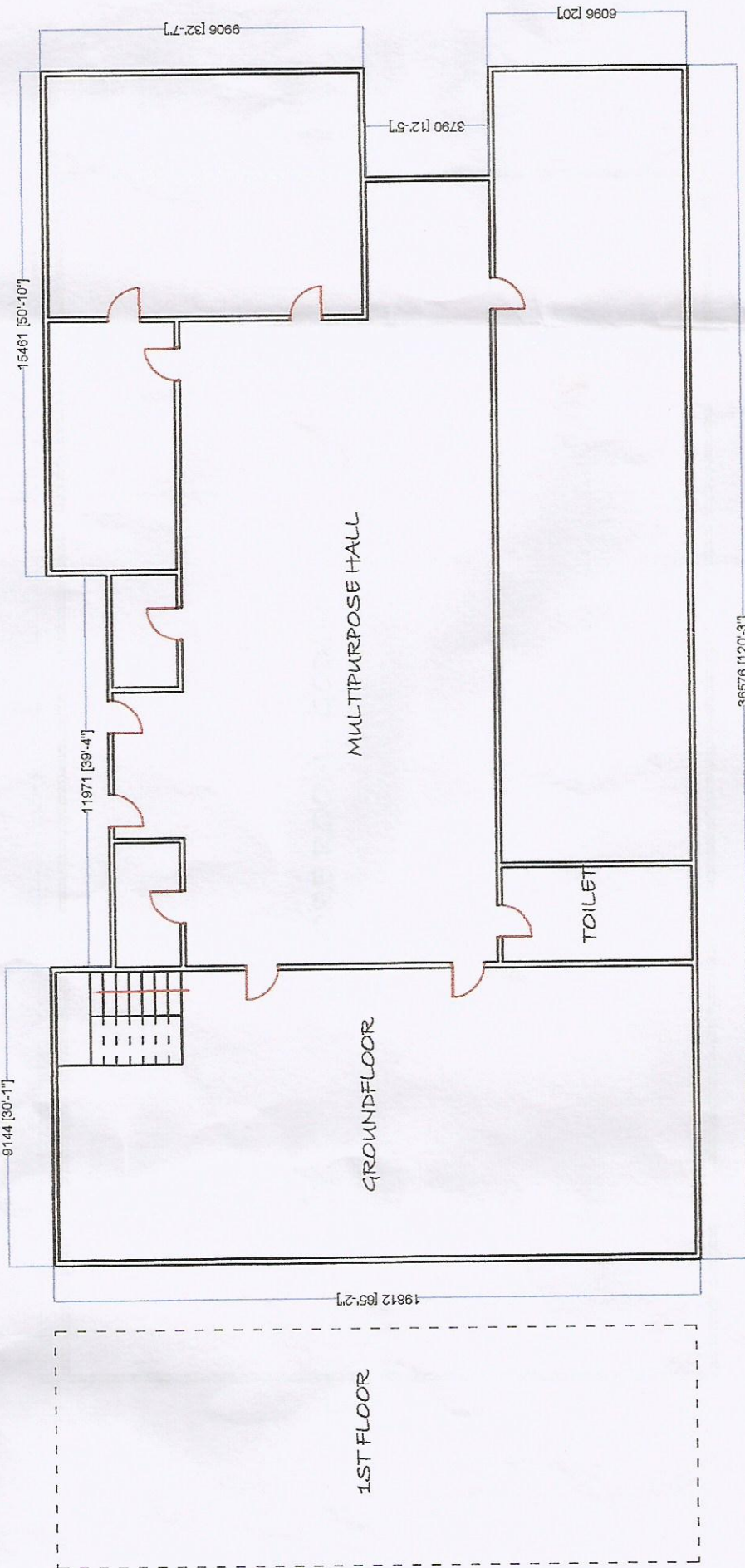


PLINTH AREA :- **243.87 SQ. M**

[Signature]
Principal i/c
Principal Anglong
DIET, DIPHU.

[Signature]
Junior Engineer,
Town & Country Planning
Diphu, Karbi Anglong

DIET BUILDING NO. 4
PLAN FOR MULTIPURPOSE HALL BUILDING



PLINTH AREA :- 690.01 SQ. M

Geslylliz
Junior Engineer,
Town & Country Planning
Diphu, Karbi Anglong

Dr. Ananta t/c
Principal Engineer
Princ. Karbi Anglong
DIET, Diphu.

DIET BUILDING NO. 5
PLAN FOR STORE ROOM BUILDING

36678 [120-37]

STORE ROOM / GODOWN

19812 [65-27]

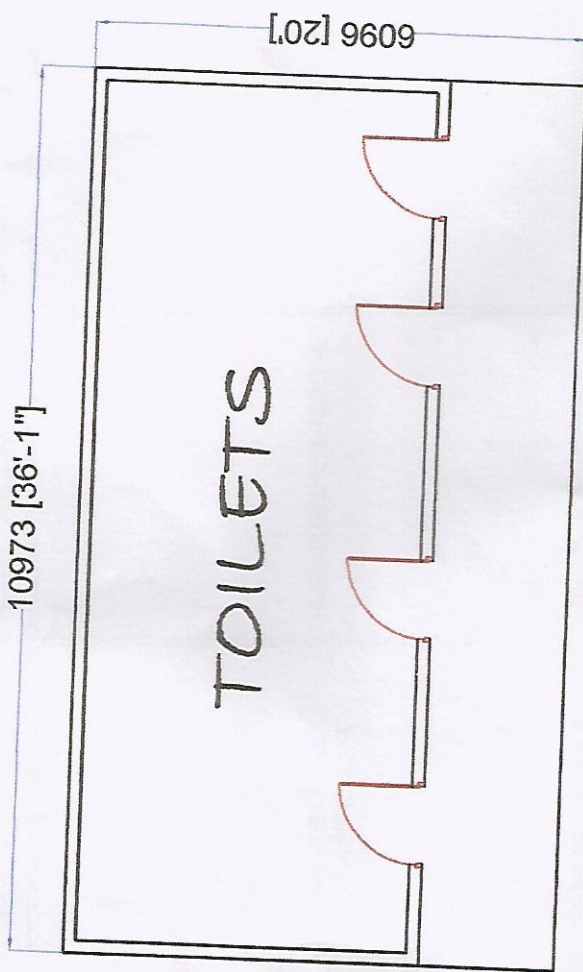
PLINTH AREA :- 724.64 SQ. M

[Signature]
Principal Architect
DIET, Diphu

[Signature]
Junior Engineer
Town & Country Planning
Diphu, Karbi Anglong

DIET BUILDING NO. 6

PLAN FOR TOILET BUILDING



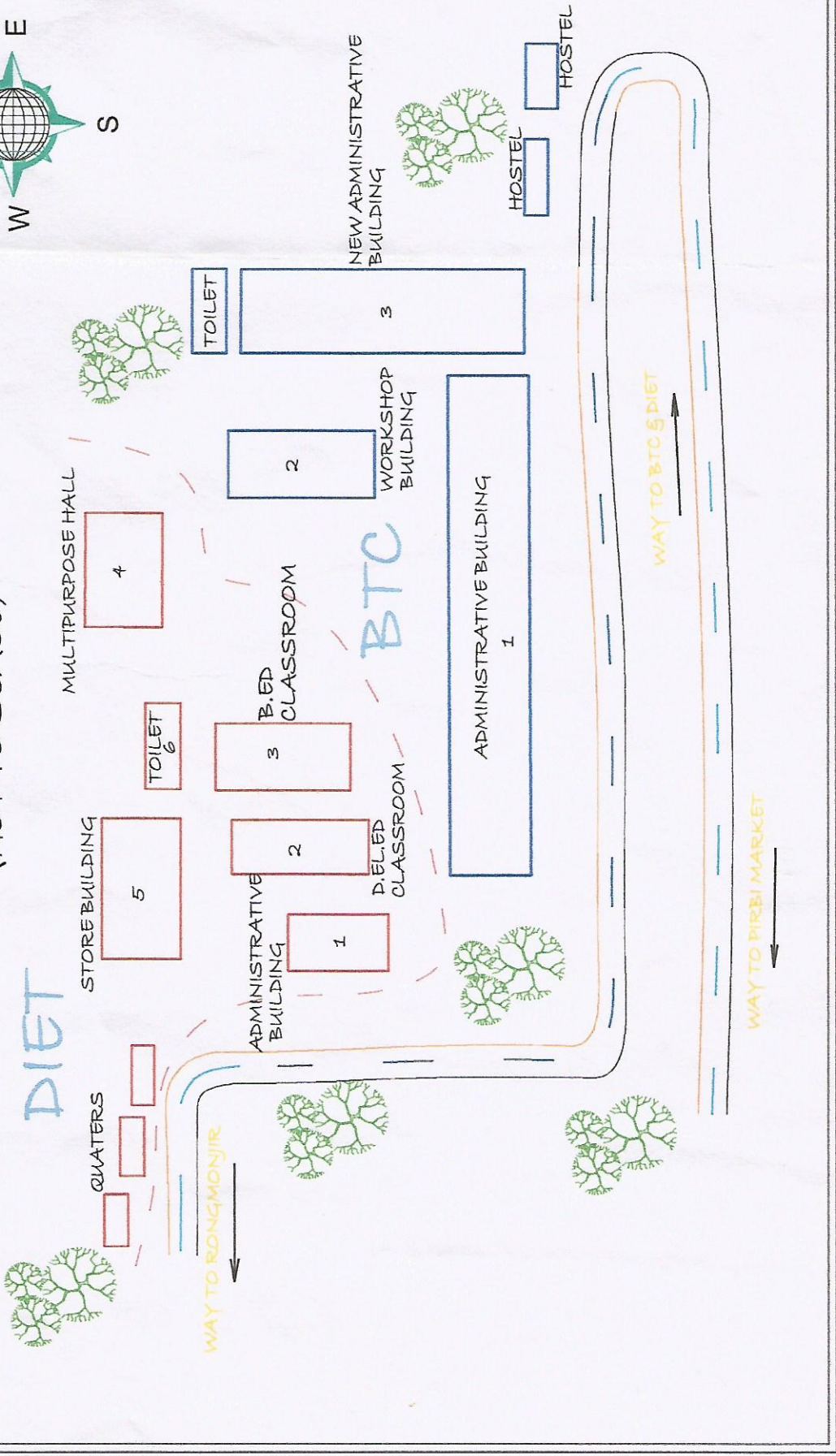
PLINTH AREA :- 66.89 SQ. M

Dr. N. J. Choudhury
Principal
Karbi Anglong
DIET, DIPH U.

H. J. Choudhury
Junior Engineer,
Town & Country Planning
Diphu, Karbi Anglong

SITE PLAN FOR BTC & DIET

(NOT TO SCALE)



Debasmita
 Junior Engineer,
 Town & Country Planning
 Diphu, Karbi Anglong

Debasmita
 Principal i/c
 DIET, Karbi Anglong
 DIPHU.